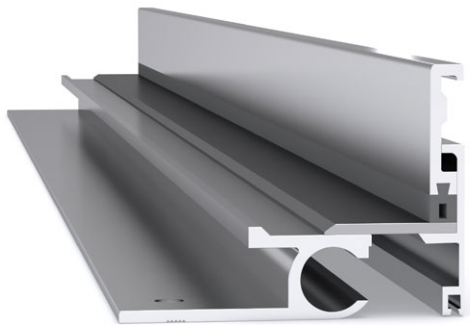
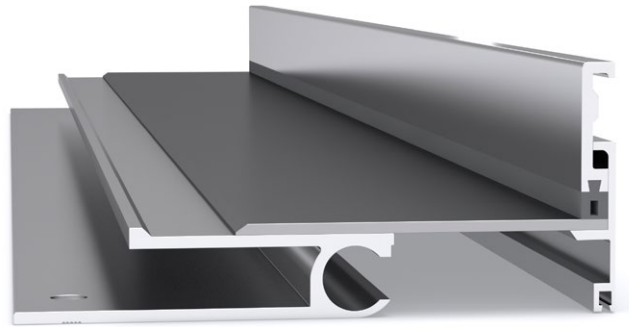
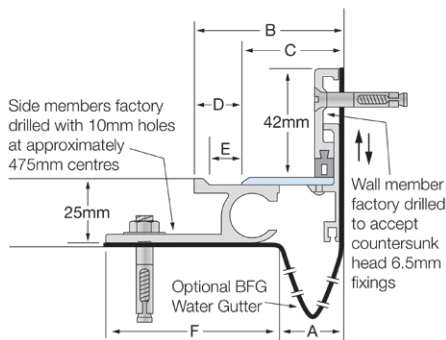


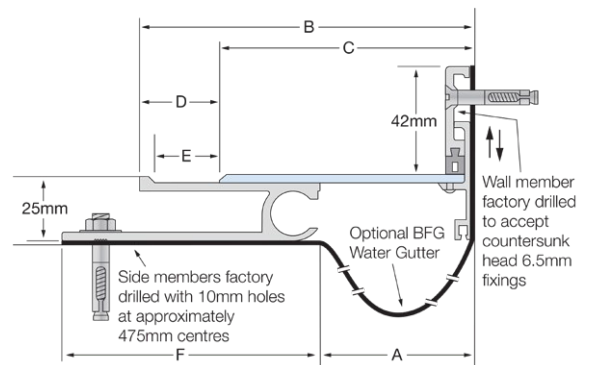
# Latham Ultimate Series Aluminium Expansion Joint Cover with Stainless Steel Cover Plate DCSL



DCSL-25 to DCSL-75



DCSL-60 to DCSL-150



Stainless Steel Code smooth deck	A	B	C	D	E	F	Movement	Total Available Movement	Overall Depth	Cover Plate Thickness
DCSL-25	25	56	37	18	12	68	+/-12mm	25mm	25mm	3mm
DCSL-50	50	82	62	18	12	68	+/-12mm	25mm	25mm	3mm
DCSL-75	75	106	87	18	12	68	+/-12mm	25mm	25mm	3mm
DCSL-60	60	130	99	40	35	105	+/-32mm	65mm	25mm	3mm
DCSL-110	110	180	145	40	35	105	+/-32mm	65mm	25mm	3mm
DCSL-150	150	220	185	40	35	105	+/-32mm	65mm	25mm	5mm



## FEATURES

- Aluminium floor-to-wall expansion joint cover with a stainless steel cover plate.
- Robust system suited to pedestrian applications.
- 25mm depth below floor finish.
- 42mm vertical depth up the wall, above floor finish.
- Installed in a preformed recess.

## MATERIALS

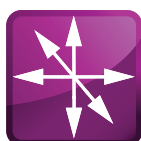
- Aluminium 6063-T5 mill finish alloy.
- 304 Grade, 2B finish stainless steel cover plates.
- Supplied in 3050mm lengths.

## FIXINGS

- Side member pre-drilled at ~475mm centres for 10mm fasteners.
- Wall member pre-drilled at ~475mm centres to accept countersunk head 6.5mm fixings.

## FURTHER TECHNICAL SPECIFICATIONS

- [Website Link - PDF and DWG Details](#)
- [Product Information](#)
- [Joint Specifications](#)
- [Fire Rated Systems](#)
- [Full Product Catalogue](#)
- [Architectural Specifications](#)
- [Warranty](#)



multi directional  
6-way movement



indoor & out-  
door use



BFG water  
gutter



fire rated (joint  
widths >50mm)