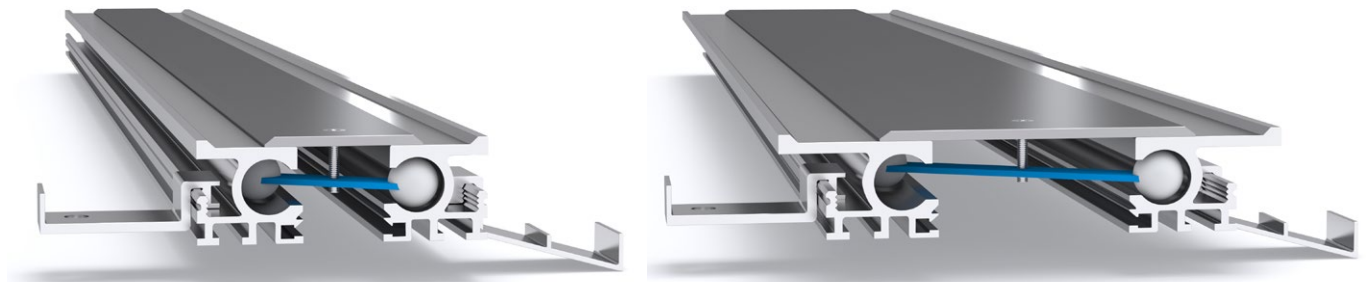
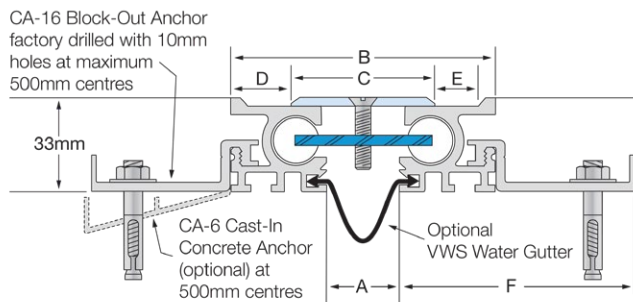


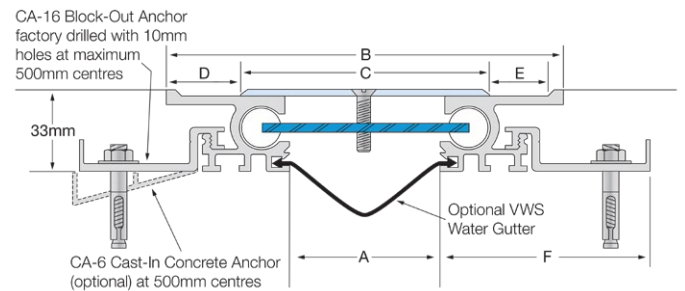
Latham Ultimate Series Aluminium Expansion Joint Cover with Stainless Steel Cover Plate



CS-25 - CS-50



CS-35 - CS-135



Stainless Steel Code smooth deck	A	B	C	D	E	F	Movement	Total Available Movement	Overall Depth	Cover Plate Thickness
CS-25	25	86	50	18	12	82	+20/-15mm	35mm	33mm	3mm
CS-50	50	111	75	18	12	82	+20/-25mm	45mm	33mm	3mm
CS-35	35	125	75	25	20	82	+35/-25mm	60mm	33mm	3mm
CS-60	60	150	100	25	20	82	+/-35mm	70mm	33mm	3mm
CS-75	75	165	115	25	20	82	+/-35mm	70mm	33mm	3mm
CS-85	85	175	125	25	20	82	+/-35mm	70mm	33mm	3mm
CS-100	100	190	140	25	20	82	+/-35mm	70mm	33mm	3mm
CS-135	135	225	175	25	20	82	+/-35mm	70mm	33mm	5mm



FEATURES

- Aluminium floor expansion joint cover with a stainless steel cover plate.
- Robust system suited to pedestrian applications.
- 33mm depth below floor finish.
- Installed in a preformed recess or cast-in.

MATERIALS

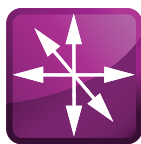
- Aluminium 6063-T5 mill finish alloy.
- 304 Grade, 2B finish stainless steel cover plates.
- Supplied in 3050mm lengths.
- Spring steel treated centering bar with nylon spherical balls (at ~475mm centres).

FIXINGS

- Supplied with clip-on CA-16 Block-Out Anchors (10mm holes pre-drilled) installed at ~500mm centres.
- On request: CA-6 Cast-In Anchors can be supplied for cast-in installations.

FURTHER TECHNICAL SPECIFICATIONS

- [Website Link - PDF and DWG Details](#)
- [Product Information](#)
- [Joint Specifications](#)
- [Fire Rated Systems](#)
- [Full Product Catalogue](#)
- [Architectural Specifications](#)
- [Warranty](#)



multi directional
6-way movement



indoor & out-
door use



VWS water
gutter



factory
curvable