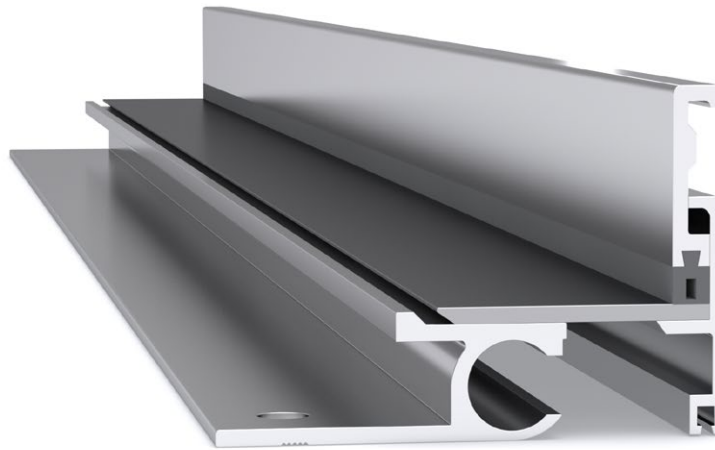
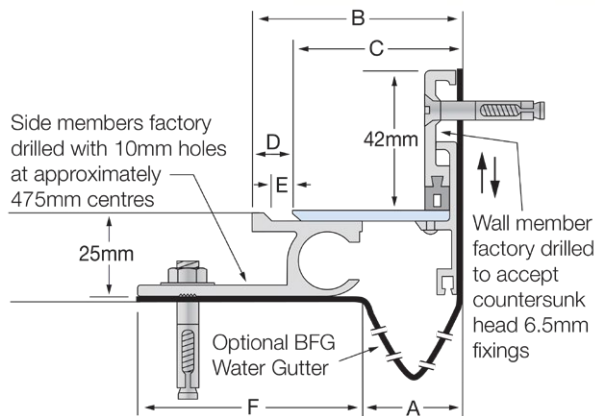


Latham Flat-Line Series Aluminium Expansion Joint Cover with Stainless Steel Cover Plate NBDSL



Illustrated: NBDSL-30



Stainless Steel Code smooth deck	A	B	C	D	E	F	Movement	Total Available Movement	Overall Depth	Cover Plate Thickness
NBDSL-30	30	60	51	9	3	68	+22/-3mm	25mm	25mm	3mm
NBDSL-53	53	86	77	9	3	68	+22/-3mm	25mm	25mm	3mm
NBDSL-80	80	109	100	9	3	68	+22/-3mm	25mm	25mm	3mm
NBDSL-105	105	134	125	9	3	68	+22/-3mm	25mm	25mm	3mm
NBDSL-155	155	184	175	9	3	68	+22/-3mm	25mm	25mm	3mm

FEATURES

- Aluminium floor-to-wall expansion joint cover with a stainless steel cover plate.
- Pedestrian applications where even the slightest bump in a floor can not be tolerated.
- Robust system suited to pedestrian applications.
- 25mm depth below floor finish.
- Installed in a preformed recess.

MATERIALS

- Aluminium 6063-T5 mill finish alloy.
- 304 Grade, 2B finish stainless steel cover plates.
- Supplied in 3050mm lengths.

FIXINGS

- Side member pre-drilled at ~475mm centres for 10mm fasteners.
- Wall member pre-drilled at ~475mm centres to accept countersunk head 6.5mm fixings.

FURTHER TECHNICAL SPECIFICATIONS

- [Website Link - PDF and DWG Details](#)
- [Product Information](#)
- [Joint Specifications](#)
- [Fire Rated Systems](#)
- [Full Product Catalogue](#)
- [Architectural Specifications](#)
- [Warranty](#)



multi directional
6-way movement



indoor & out-
door use



BFG water
gutter



fire rated (joint
widths >50mm)