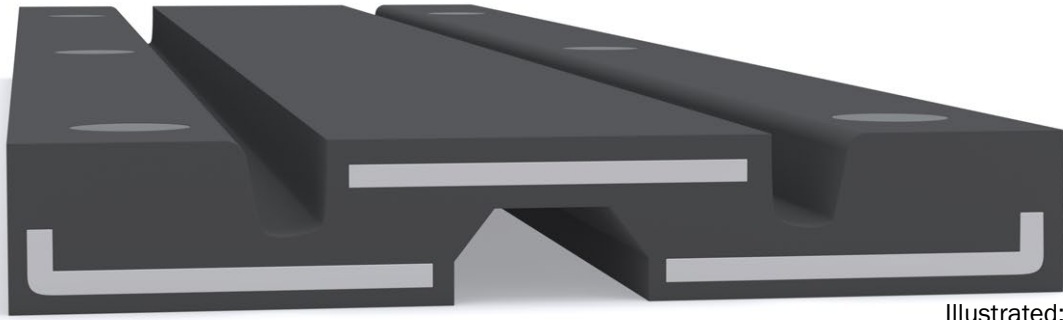
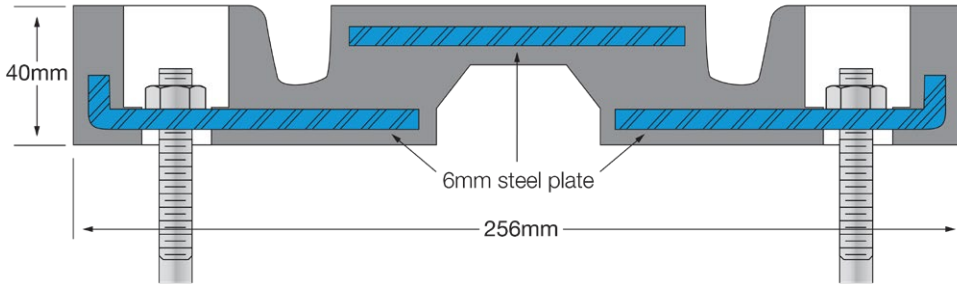
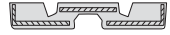
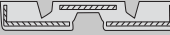




Latham Bridge Joint Series Aluminium Expansion Joint Cover SER



Illustrated: SER-50



Model	Movement Accommodation (Total) (mm)	Module Length (mm)	Module Width (mm)	Module Depth (mm)	Stud Diam. (mm)	Module Weight (kg)	Max. Stud height above shelf (mm)	Bolt Torque (Nm)	Max. Joint Width (mm)	Recess Depth (mm)	Transition Strip Width (mm)	Bolt Hole Centres (mm)	Bolt Hole Centre along unit (mm)	End of Unit to first bolt hole (mm)
SER 50 	50	2000	256	40	12	42	32	45	76	46	100	205	400	200
SER 65 	65	2000	356	46	16	74	40	100	98	52	100	279	335	162.5
SER 100 	102	1830	590	54	20	150	42	175	152	60	100	498	305	152.5
SER 165 	165	2000	724	74	24	262	51	190	203	81	125	618	325	162.5

FEATURES

- Steel enclosed rubber floor expansion joint cover.
- Designed to control movement in roadway type applications.
- The joint is strengthened by the fully encapsulated, and therefore rust resistant steel support plates to accommodate high speed vehicular traffic.
- The system is water tight and the smooth surface wear resistant to reduce the likelihood of skidding.

MATERIALS

- Moulded natural rubber.
- 6mm steel reinforcing plates.
- Supplied in 1220mm lengths.

FIXINGS

- The recess width, depth and fixing requirement will vary in accordance with the joint width and required movement. Contact your Latham representative for further details.

FURTHER TECHNICAL SPECIFICATIONS

- [Website Link - PDF and DWG Details](#)
- [Product Information](#)
- [Joint Specifications](#)
- [Fire Rated Systems](#)
- [Full Product Catalogue](#)
- [Architectural Specifications](#)
- [Warranty](#)



multi directional 6-way movement



indoor & outdoor use



vehicular