

SGAL (SM) PAVA Series - Seismic Movement

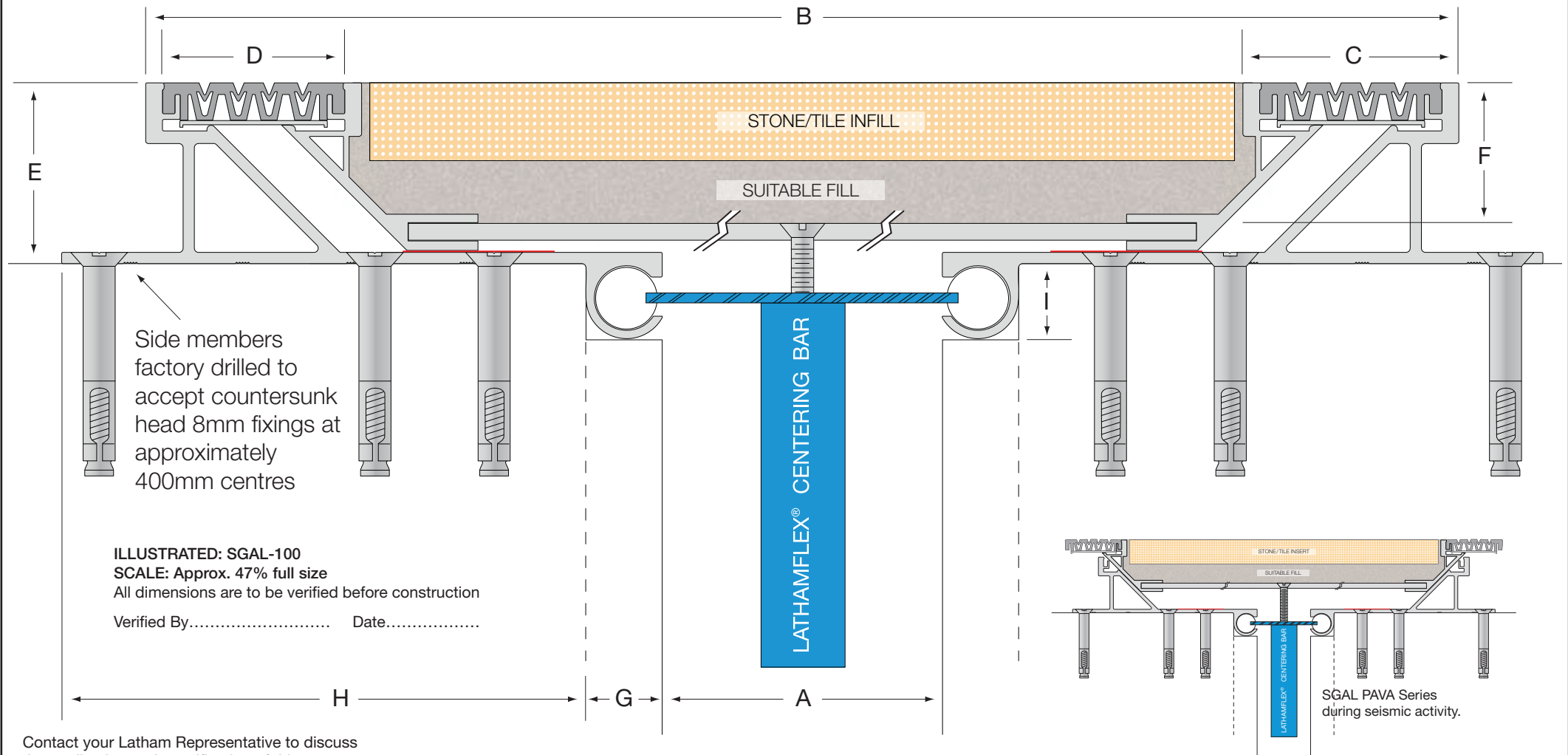
Flexible Mechanical Expansion Joint Cover

LATHAM AUSTRALIA PTY LTD

14 TENNYSON ROAD GLADESVILLE 2111 AUSTRALIA

Phone: 61 2 9879 7888 Fax: 61 2 9879 7666

Web: www.latham-australia.com



Contact your Latham Representative to discuss the application and specification of this system.

Aluminium Code	A	B	C	D	E	F	G	H	I	Normal Everyday Movement	Seismic Movement	Cover Plate Thickness
SGAL-50 (SM)	50	418	77	65	65	50	28	185	30	+/-20mm	-30mm/+ Unlimited	6mm
SGAL-75 (SM)	75	443	77	65	65	50	28	185	30	+/-20mm	-50mm/+ Unlimited	6mm
SGAL-100 (SM)	100	468	77	65	65	50	28	185	30	+/-20mm	-75mm/+ Unlimited	6mm
SGAL-150 (SM)	150	518	77	65	65	50	28	185	30	+/-20mm	-125mm/+ Unlimited	6mm
SGAL-200 (SM)	200	568	77	65	65	50	28	185	30	+/-20mm	-175mm/+ Unlimited	6mm

All dimensions are in millimetres.

Exterior/Interior applications.

All mechanical expansion joint fixings by others.

Aluminium fixed members with specified cover plate.

The centering bar consists of two full nylon cylinders fastened at opposite ends of a flat spring steel bar. The bar is positioned diagonally across the joint opening with the cylinders inside the extruded cylindrical tracks.

Design subject to change without notice

COPYRIGHT © 2009
LATH3513