

RTJ-1 Series Car Joint System

LATHAM AUSTRALIA PTY LTD

14 TENNYSON ROAD GLADESVILLE 2111 AUSTRALIA

Phone: 61 2 9879 7888 Fax: 61 2 9879 7666

Web: www.latham-australia.com

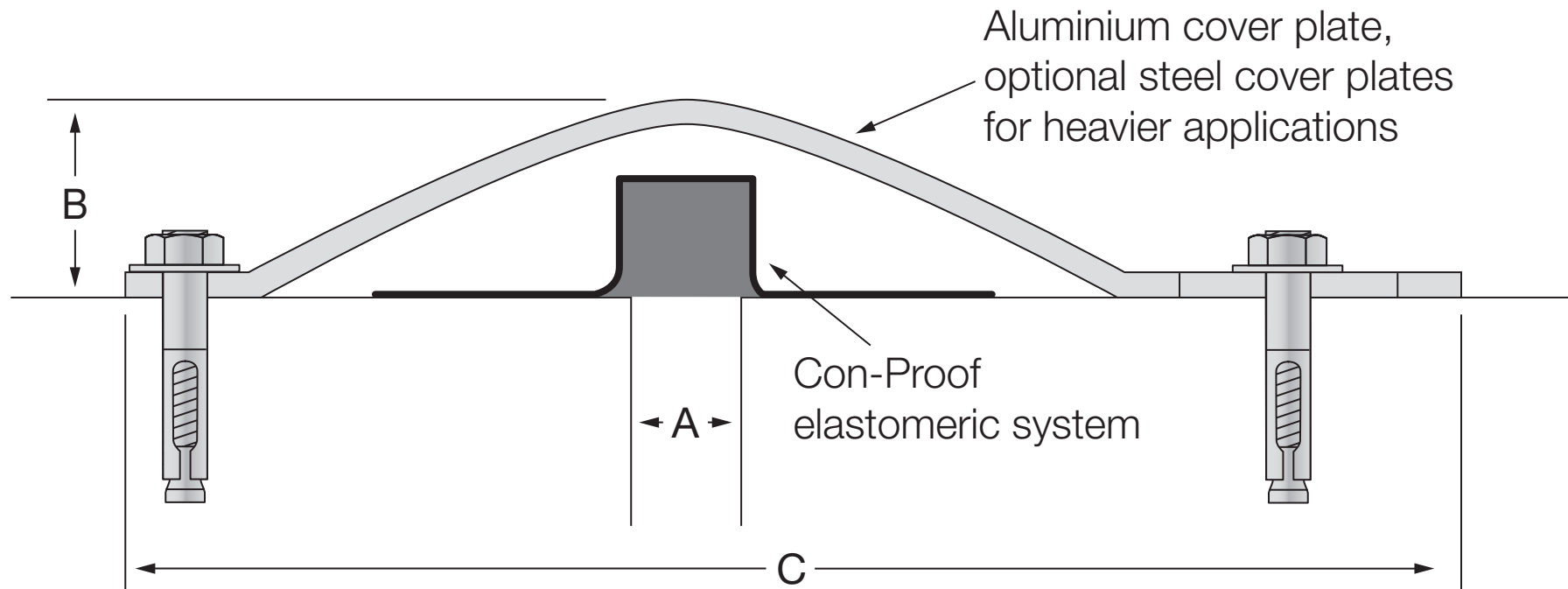


ILLUSTRATED: RTJ-1 Car Joint

SCALE: Approx. 50% full size

All dimensions are to be verified before construction

Verified By..... Date.....



Contact your Latham Representative to discuss the application and specification of this system.

Aluminium Code	A	B	C	Total Available Movement
RTJ-1	25	45	300	50mm

All dimensions are in millimetres.

All mechanical expansion joint fixings by others.

Latham RTJ-1 Car Joints can be installed to waterproof narrow or wide joints and expansion or flexing joints where horizontal movement between building components is anticipated.

Design subject to change without notice

COPYRIGHT © 2009
LATH3513