

LDAS LIGHT DUTY ABRASIVE RESILIENT

LATHAM LDAS LIGHT DUTY ABRASIVE RESILIENT STAIR TREAD NOSINGS

INTERIOR APPLICATION ONLY – DOMESTIC & LIGHT COMMERCIAL USE

Latham Light Duty Abrasive Resilient Stair Tread Nosings consist of a preformed PVC strip containing abrasive aluminium oxide granules supplied separate for fitting into the supplied aluminium base during installation.

Standard infill colour is black (supplied unless otherwise specified).

Stair tread nosings are mill finish aluminium.

Standard length: 4600mm or cut to length at additional cost.

Note: Resilient infill may shrink.

Service factors must be taken into consideration when selecting stair tread profile



LDAS 501 AR (cream)



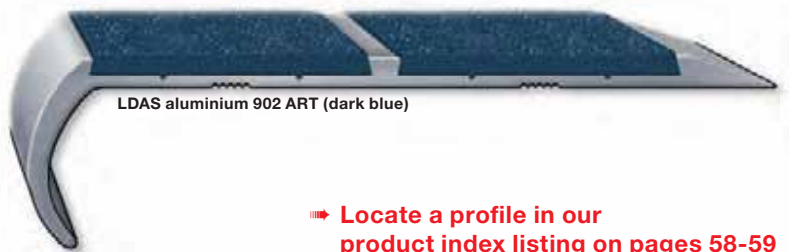
LDAS 591 ART (green)



LDAS 601 TTAR (rust)



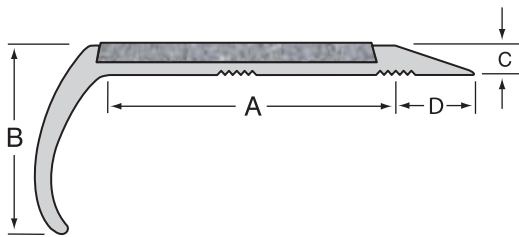
LDAS 802 AR (black)



LDAS aluminium 902 ART (dark blue)

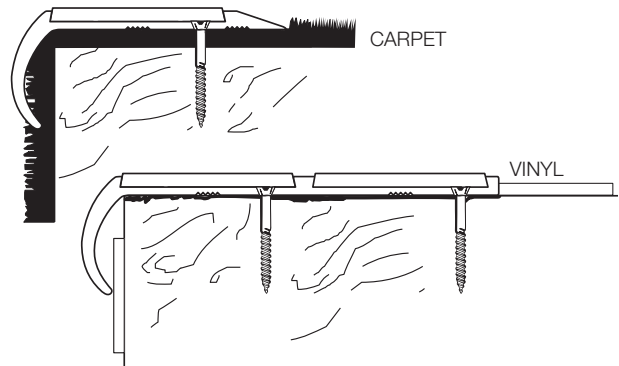
➔ **Locate a profile in our product index listing on pages 58-59**

PRODUCT GUIDE



Product No.	Metal Type	A	B	C	D	E
LDAS 501 AR	Aluminium	50	25	4	-	6
LDAS 591 ART	Aluminium	50	25	4	10	6
LDAS 601 TTAR	Aluminium	42	-	4	10 +10	-
LDAS-802 AR	Aluminium	80	25	4	-	6
LDAS 902 ART	Aluminium	80	25	4	10	6

ONSITE FITTING INSTRUCTIONS



Install over Tytred Type 2 Adhesive. Insert should be stored in site conditions before trimming to length, allowing it to normalise as shrinkage may occur.

LIGHT DUTY ABRASIVE INFILL COLOUR GUIDE

Standard colour is black. Optional infill available in a wide range of colours to accent and harmonise in most applications.



dark blue



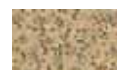
grey



green



black



cream



rust

MUSIC

Latham Original Asbra Slip Resistant Stair Treads & Nosings

ECONOMICAL AND EASY TO INSTALL, LATHAM ORIGINAL SAFETY STAIR TREADS PROVIDE SLIP RESISTANT PROTECTION FOR PEDESTRIANS, BUILDING OCCUPANTS AND OWNERS. THE STAIR TREAD NOSING HIGHLIGHTS THE LEADING EDGE OF THE STAIR AND ARE FILLED WITH SLIP RESISTANT SUREGRIP BLACK OR COLOURED SUPAGRIT SILICON CARBIDE GRANULES

Filled with slip-resistant Suregrip and Supagrit silicon carbide mineral granules for heavy and light duty applications. Service factors must be taken into consideration when selecting stair tread profile.

Lengths

All Asbraloy and Asbrabronz profiles are offered factory cut to the site required length (up to 4600mm in 1 continuous length) complete with countersunk holes, stainless steel or brass screws (depending on the selected section) and plastic plugs. If specified at time of order treads can be supplied in full manufacturing lengths of 4600mm for on site cutting and drilling to suit clients supplied fixings.

All Asbraloy and Asbrabronz Safety Stair Tread Nosings are discreetly stamped on the surface close to one end "as manufactured by Latham Australia", which ensures installed material can be identified in the future and is the clients confirmation that the specified product has been installed.

Factory Cutting Tolerance: +0/-3mm.

Screw Fixing Holes

Unless otherwise specified at time of order, holes will be provided in the treads to suit 8 gauge stainless steel or brass screws (note details under ACCESSORIES-FIXING page 4) at Latham's standard 250mm centres. Any special machining, mitering, modifications or alternative hole locations will be carried out at extra cost.

Finishes

Asbraloy Aluminium profiles are supplied in mill finish. On request profiles can be supplied with a polished bullnose or in clear anodized finish at additional cost. In marine type applications Asbraloy profiles should be specified with 20 micron clear anodised finish.

Asbrabronz Brass profiles are supplied in brush finish. On request profiles can be supplied with a polished bullnose.

Bevelled Side Edge

For surface mounted treads and landings that can be approached from all sides. Particularly applicable

to the top tread and where small children are walking (must be specified at time of ordering). Available in most profiles.

Slip Resistance Testing

Slip Resistance Performance Testing for Asbraloy and Asbrabronz profiles can be found on page 54 of this catalogue.

Luminance Contrast

Details of Luminance contrast for Asbraloy and Asbrabronz products can be found on page 55 of this catalogue.

Fire Tests

Fire Test results for Asbraloy and Asbrabronz profiles in accordance with AS ISO 9239.1 2003 can be found on page 56 of this catalogue.

Miters

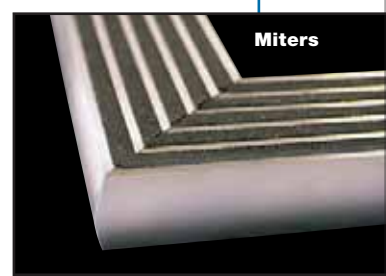
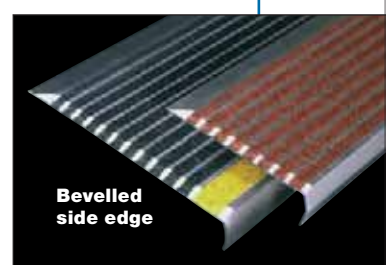
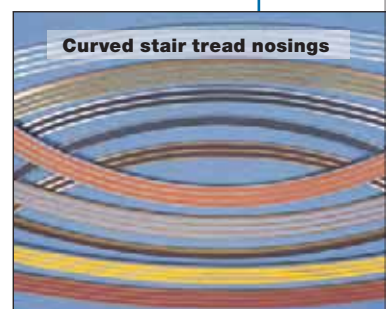
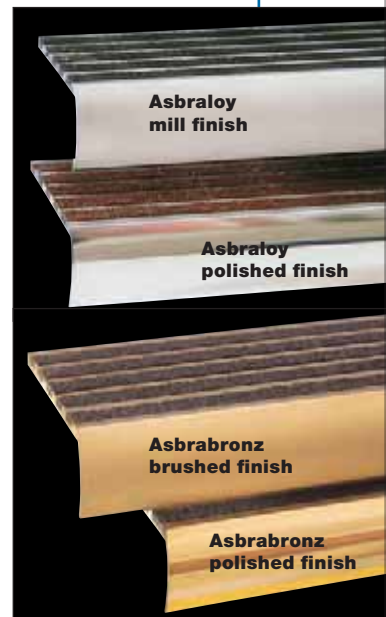
A feature of the Asbraloy and Asbrabronz range is its flexibility. Treads can be mitered to suit requirements. Miters will be supplied loose unless welding is specified. When ordering please specify miter; 90 degree angle or angle desired and confirm whether mitered face of nosing is the internal or external corner of the tread.

Curved Nosings

Some profiles can be curved to a constant radius. Sections 834ST, 513, B503, 745, 755, 765, B745, B765, 322, B322, 493, B483, in Stainless Steel 12-140 RHB, 12-140 RHC. Discuss with your Latham representative the radius required and if convex or concave along front edge of nosing before specifying and purchase. Hard template suitably marked up showing front leading edge of step and template marked visual top face must be provided (see page 13 for further instructions).

Extra Chemical Resistance

Extra Chemical Resistance Infill should be specified for areas where harsh chemicals are used, such as commercial cleaning compounds in commercial kitchens. Latham recommend Gold-Chem Neutral Ph Concentrated Cleaner for all Asbraloy and Asbrabronz products (see page 4).



www.latham-australia.com
Email: trends@latham-australia.com

Colour Range Slip Resistant Infill

Asbraloy Aluminium Suregrip standard infill colour is sparkling black. Asbrabronz Brass Suregrip standard infill colour is brown. Optional Supagrit infill colours available at extra cost (batch colours may vary and amber).



CLEANING AND MAINTENANCE

Latham recommend that Gold-Chem™ Neutral pH Concentrated Cleaner be considered for washing and maintaining the appearance of all Latham Asbraloy and Absrabronz Stair Tread Nosings.

In our experience no cleaner, detergent or soap has ever performed like Gold-Chem™. This highly concentrated powder is mixed with water in appropriate proportion and applied to the surface. In minutes with light brushing the chemical loosens dirt marks and most stains.

Gold-Chem will not effect the bond between the treads and the step or substrate, or break down the Suregrip™ or Supagrit™ mineral inserts which can be the case with some harsh commercial cleaners.

Latham recommend that all treads be at least mechanically fixed, and where possible also be adhesive fixed, see details below. From time to time or when vibration becomes apparent the fixings should be checked and tightened as required.



LEVELLING & BEDDING ADHESIVES FOR STAIR TREAD & MALL BARS



Titazel™ Thixotropic Epoxy Resin Adhesive

Internal/external application Titazel™ Thixotropic Epoxy Resin Adhesive - only for treads that do not require repair or levelling. (Approx. nett weight 1.5 Kg.)

Approximate coverage 25 LM on 75mm section or 18 LM on 135mm section on a level stair that is not hollow or worn. For hollow or worn stairs use Titazel™ RA-1. For further details see pages 35-38.



Titazel™ RA-1 Resin Filling & Levelling Adhesive

Internal/external application Titazel™ RA-1 Resin Adhesive Filling & Levelling Kit. For further details see page 35.

Developed especially for fixing Asbraloy™ nosings on worn and damaged treads. (Approx. nett weight 3.5Kg - 2m² at 1mm thick).

Asbra Titazel™ Clean Up Solvent

Removes uncured resins or cartridge adhesive during installation. Can also be used to wipe off underside of tread nosings before adhesive fixing for better bond. 4 litre and 500 ml.



Tytred 2 Bedding Adhesive

For internal and external applications, quick and easy Tytred 2 Bedding Adhesive bonds and beds stair tread nosings to most surfaces. Requires installation in conjunction with standard configuration screw fixings. Cartridge: 300 gms

Coverage: two beads (front bead heavy) on 75mm-100mm width nosing sufficient for approximately 4.6LM on a level stair that is not hollow or worn.

ALUMINIUM & BRASS STAIR TREAD CUTTING WHEELS

The aluminium and brass Abrasive Stair Tread Cutting Wheels are exclusively manufactured for cutting Latham Stair Tread sections. The fine grade silicon carbide fabric enclosed and wax encrusted blades create the best cut available for the treads when multiple cuts are required (standard metal cutting blades will be damaged by the abrasive inserts in the stair treads). The cutting wheels are designed to be used on a drop or friction saw with maximum RPM of 3400. The new wheel diameter is 355mm, with a bore size of 25.4mm.

These cutting wheels are available for purchase from Latham Australia when the material is supplied in full 4600mm manufacturing lengths for site cutting to the required sizes.

On a properly set up drop saw, you should expect approximately 90 cuts for 75mm-100mm wide treads from 1 blade (different saws will achieve different results).



ACCESSORIES - FIXING



25mm, 31mm & 37mm x 8G

Stainless Steel, Brass, or Blackened Steel Countersunk Head Screws on request.

Use 8 gauge for slip-resistant nosings and Asbra resilient nosings. Blackened steel should not be used externally. Unless otherwise specified 25mm 8G screws (stainless steel for Asbraloy and brass for Absrabronz) will be supplied.



Plastic Plugs
To suit 8 Gauge screws



Mechanical Expansion Shield Fixing (M6)
Countersunk Head (countersunk head will protrude wider than silicon carbide bar)



Stainless Steel Countersunk Head Metal Thread Screws and Nuts
8 x 25mm
Lengths 16mm, 25mm.
Other lengths available