

AB Brass Flat-Line Series - No Bump Visual

Flexible Expansion Joint Cover

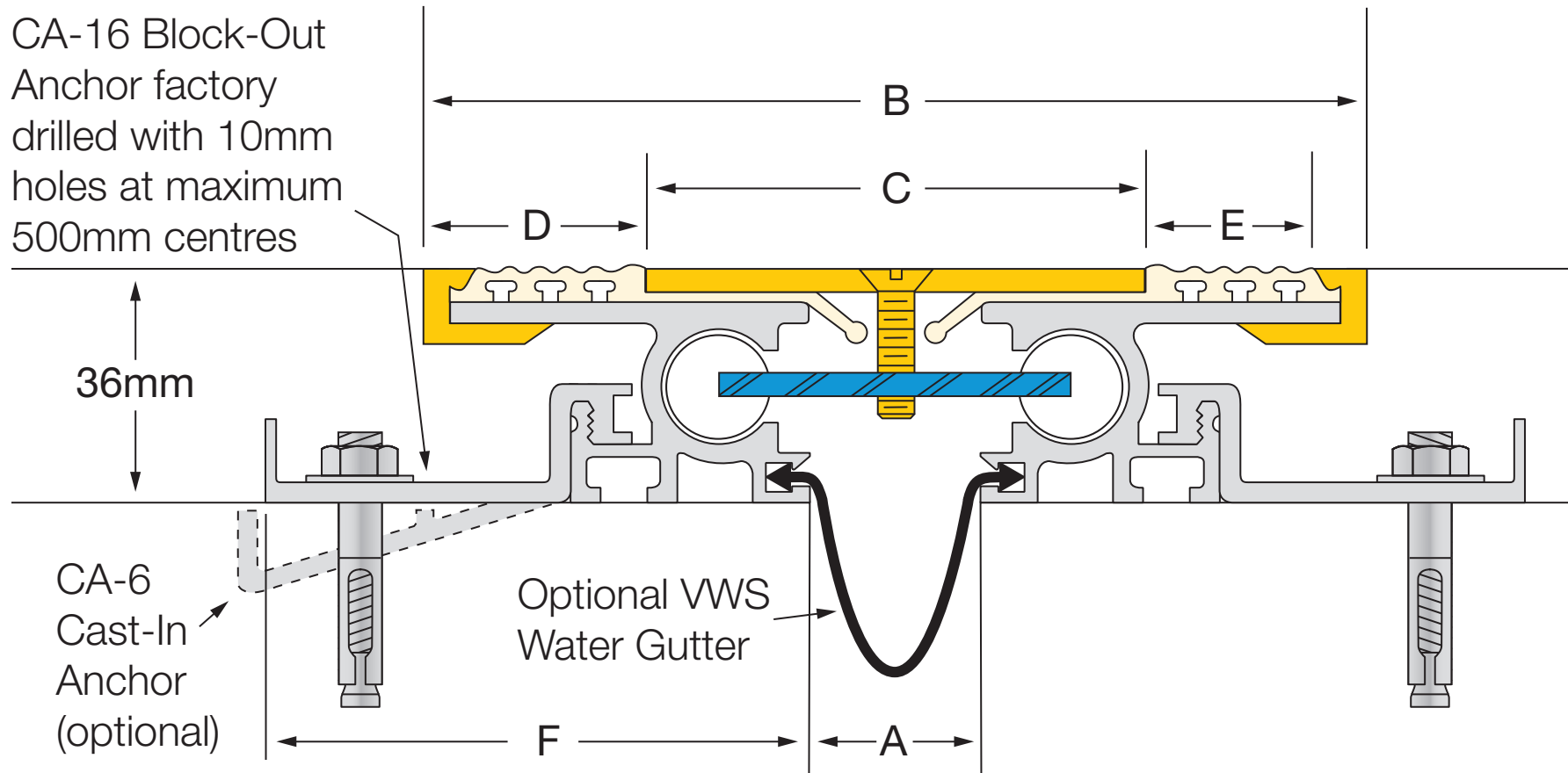
LATHAM AUSTRALIA PTY LTD
 14 TENNYSON ROAD GLADESVILLE 2111 AUSTRALIA
 Phone: 61 2 9879 7888 Fax: 61 2 9879 7666
 Web: www.latham-australia.com



Illustrated: AB-25 Scale: Approx. Full Size
 All dimensions are to be verified before construction

Verified By..... Date.....

CA-16 Block-Out
 Anchor factory
 drilled with 10mm
 holes at maximum
 500mm centres



36mm

CA-6
 Cast-In
 Anchor
 (optional)

Optional VWS
 Water Gutter

Interior use only.

All mechanical expansion joint fixings by others.

Brass Flexible Floor Expansion Joint Covers.

The centering bar consists of two full nylon spheres fastened at opposite ends of a flat spring steel bar. The bar is positioned diagonally across the joint opening with the spheres inside the extruded cylindrical tracks. This unique concept allows for increased rotational movements and maintains constant spring tension at the centre of the cover plate. This greatly reduces the stresses on the embedded anchor sections and the surrounding concrete slabs.

Design subject to change without notice.

COPYRIGHT © 2009

Solid Brass Code	A	B	C	D	E	F	Movement	Total Available Movement	Overall Depth
AB-25	25	141	75	33	25	82	+/-6mm	12mm	36mm
AB-50	50	166	100	33	25	82	+/-6mm	12mm	36mm
AB-75	75	191	125	33	25	82	+/-6mm	12mm	36mm
AB-100	100	216	150	33	25	82	+/-6mm	12mm	36mm
AB-150	150	266	200	33	25	82	+/-6mm	12mm	36mm

All dimensions are in millimetres.

LATH3513