

FRLSM Series - Seismic Movement

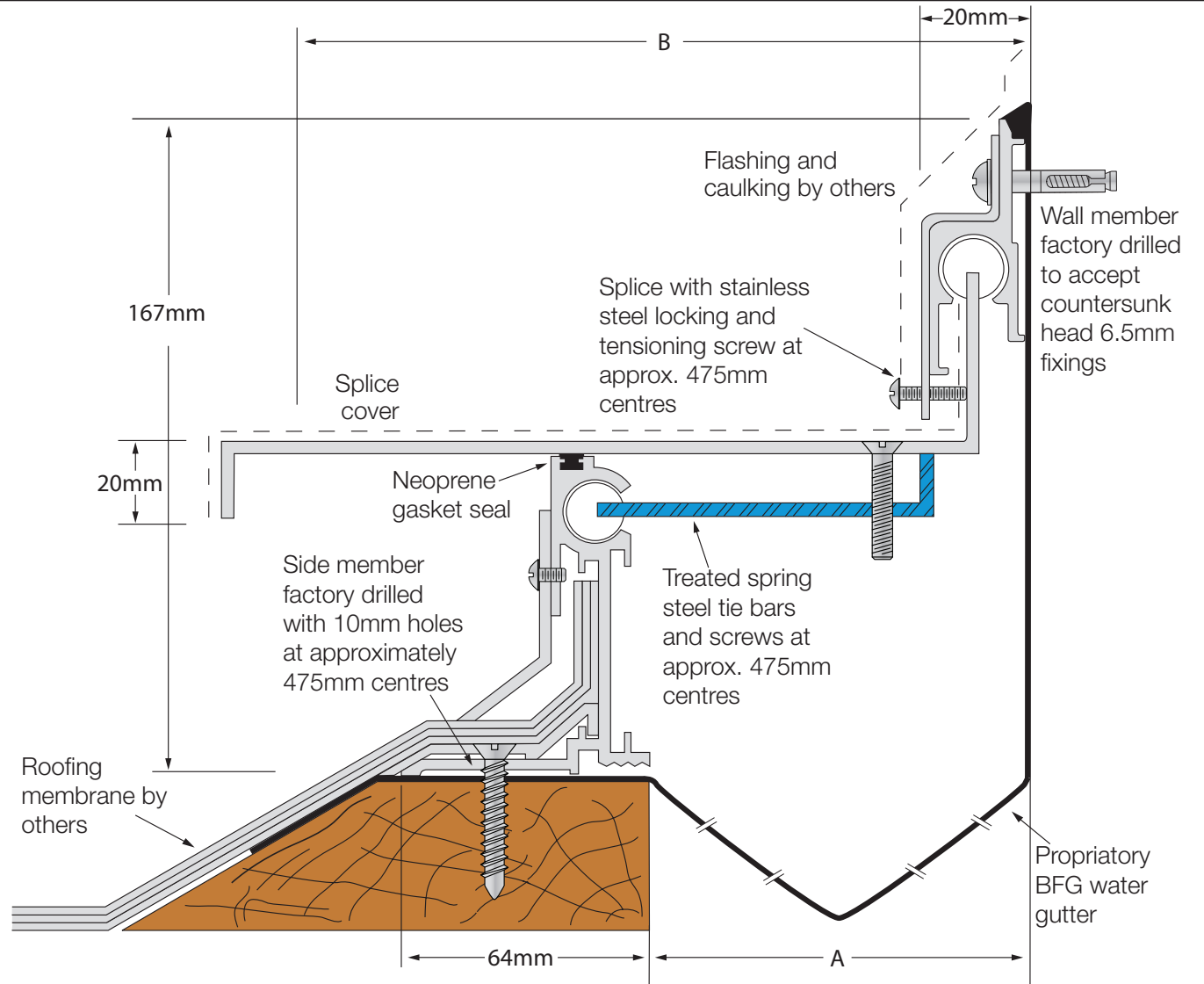
Flexible Mechanical Expansion Joint Cover

LATHAM AUSTRALIA PTY LTD
 14 TENNYSON ROAD GLADESVILLE 2111 AUSTRALIA
 Phone: 61 2 9879 7888 Fax: 61 2 9879 7666
 Web: www.latham-australia.com



Illustrated: FRLSM-100 (not to scale)
 All dimensions are to be verified before construction

Verified By..... Date.....



Contact your Latham Representative to discuss the application and specification of this system.

Aluminium Code	A	B	Movement	Total Available Movement	Cover Plate Thickness
FRLSM-100	100	233	+100/-75mm	192mm	2.5mm
FRLSM-150	150	333	+150/-125mm	292mm	2.5mm
FRLSM-200	200	433	+200/-175mm	392mm	2.5mm
FRLSM-250	250	533	+250/-225mm	492mm	2.5mm
FRLSM-300	300	633	+300/-275mm	592mm	2.5mm
FRLSM-400	400	833	+400/-375mm	792mm	3mm
FRLSM-500	500	1033	+500/-475mm	992mm	3mm
FRLSM-600	600	1233	+600/-575mm	1192mm	3mm

All dimensions are in millimetres

Exterior/Interior applications.
 All mechanical expansion joint fixings by others.
 The centering bar consists of two full nylon cylinders fastened at opposite ends of a flat spring steel bar. The bar is positioned diagonally across the joint opening with the cylinders inside the extruded cylindrical tracks.
 Design subject to change without notice.

COPYRIGHT © 2019