

## Interior and Exterior Application - Commercial and Industrial Use

### Heavy Duty Slip Resistant Trowelable Resin Safety Tread Kit

**Lathan Asbra Titazel ST is a commercial application, heavy duty, slip resistant, trowelable resin abrasive granule for floor surfacing, tread surfacing and tread bars. It is supplied standard in Suregrip Sparkling Black, with an option, at additional cost, for other colours.**

The recently update AS1428.4-2009 indicates a strip of contrast colour 50mm-75mm wide be applied to the edge of the tread with a maximum set back of 15mm.

It should be noted when using Asbra Titazel ST that damaged or cracked concrete floors should be repaired before application.

### Details

#### Treads

Recommended 2 bars 15mm wide x 10mm deep, 25mm apart or 1 bar 50mm wide x 10mm deep and both 15mm from tread nosing.

#### Ramps

Bars (minimum size) 15mm wide x 10mm deep, 100mm apart. Titazel is trowelled in a plastic form into sawn or preformed grooves.

#### Surfacing

One square metre approximately when applied to flat clean surface with Titazel laid in a plastic form 2mm thick. It will adhere to concrete, terrazzo, exposed aggregate; and is suitable for large areas of mild steel chequer plate landings, ramps and other dangerous situations (area must be suitably prepared).

Pot life at 21°C is 40/50 minutes, at higher temperatures pot life will be shorter and at lower temperatures longer (do not install in cold weather under 15°C, when temperature is below 21°C. Warm up tins to facilitate mixing).

Apply to work area and leave undisturbed for 12 hours.

Requires Asbra Trowel Glide and Asbra Tread Masking Tape – HD33.

On special request – we can offer Titazel Type STW a specially developed product for application in damp situations (STW unsuitable for bonding to metals).

#### Contents

1. Suregrip Titazel Slip-Resistant Resin Abrasive Granules "A".
2. Titazel "B" Hardener.
3. Trowel Glide in small can.
4. Plastic Disposable Gloves.





## Interior and Exterior Application - Commercial and Industrial Use

### General Information

#### Titazel ST Slip Resistant Resin

#### Abrasive Granule Compound Coverage

#### Standard ST-1 Pack

**Treads (2 bars):** (dependant on site conditions).  
15mm wide x 10mm deep approximately 6 lineal metres of tread.  
12mm wide x 10mm deep approximately 7.5 metres of tread.

**Treads (1bar):** (dependant on site conditions)  
50mm wide x 10mm deep approximately 3.7 metres

**Surfacing:** (dependant on site conditions).  
Approximately 1m<sup>2</sup> x 2mm thick.

#### Bulk Pack ST10

Equivalent to 10 ST-1 packs (one can only).

#### Asbra Trowel Glide

500 ml, 4 litre.

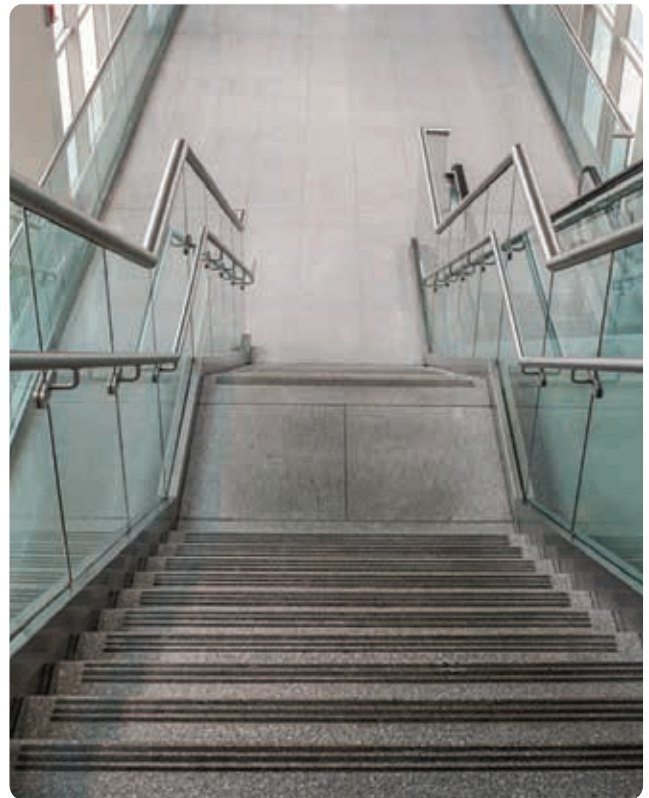
#### Asbra Type HD33 Heavy Thickness

#### Tread Masking Tape

33 metre rolls sufficient for 5 metres of twin slip resistant bars spaced at 25mm apart or 8 metres single bar (use minimum double thickness).

**Note:** Asbra Tread Masking Tape is a thicker tape, use minimum of two layers to provide the required finished height above treads. If regular masking tape is used lay a minimum of five layers or more (use smooth back tape only).

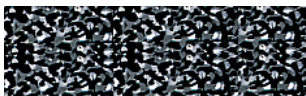
Latham Asbra Titazel Abrasive Slip Resistant Safety Tread when correctly specified and applied complies with and exceeds the slip resistant requirements of Standard AS/NZS 4586-2004 in both wet and dry conditions.



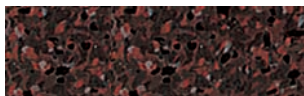
Service factors must be taken into consideration when specifying and applying.

### Suregrip™ Colour Range

Standard colour is black. Optional colours available at additional cost. Colours may vary and amber.



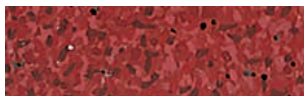
black-standard



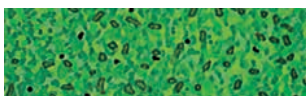
brown



grey



terracotta



green



off-white



buff



safety yellow



lumo luminescent (glow-in-the-dark)

